

DETROIT ECONOMIC GROWTH ASSOCIATION  
JOE LOUIS GREENWAY WARREN YARD TRAILHEAD CONSTRUCTION PROJECT  
ADDENDUM NO. 3  
January 12, 2022

---

This Addendum is incorporated into the requirements and contract documents for the Request for Proposals referenced above and shall be so indicated as Addendum No. 3 on the proposal form accompanying the submittal for this project.

All terms and conditions of the Request for Proposal, Addendum No.1 and Addendum No. 2 shall remain unchanged except as specifically changed or amended by the following:

**1.0 Additional Responses to Q&A from Pre-bid Conference and Supplemental Information**

**Response:** Please see Exhibit 1 – Supplemental Information for Bidders for answers to the outstanding questions proposed at the Pre-bid conference as well as additional project information.

**2.0 Revised Bid Tab Form**

**Response:** Please see Exhibit 2 – Revised Bid Tab form. Bidders should utilize the revised form included in this amendment when submitting their bid proposal.

**3.0 Alternate Pricing**

**Response:** Bidders should include alternate pricing for the items listed on the Revised Bid Tab Form (Exhibit 2). Bidders should include a unit cost as well as a total cost for each item/task. Alternate pricing is to be listed separately and **should not** be included in the base proposal bid.

**4.0 Site Drawings**

**Response:** Please see Exhibit 3 – Site Drawings for additional information regarding surfacing and edging details.

**5.0 Bid Proposal – Construction Timeline**

**Response:** Bidders must provide a proposed construction timeline in their bid proposal that outlines the construction scope and process.

## **6.0 Questions and Clarifications Deadline**

**Response:** The Questions and Clarifications deadline has been extended to Thursday, January 20, 2022 at 3PM. Questions should be submitted via email to: **orobertson@degc.org**, **William.mccarley@detroitmi.gov**, and **kleinj@detroitmi.gov**.

## **Exhibit 1 – Supplemental Information for Bidders**

## Supplemental Information for BIDDERS

For purposes of this supplement:

- The EQUIPMENT SUPPLIER is Earthscapes, an entity headquartered in Wallenstein, Ontario.
  - The SITE CONTRACTOR is Major Cement, its authorized representatives, and its subcontractors.
  - The FIDUCIARY is Detroit Economic Growth Authority (DEGA), Detroit MI
  - The CITY REPRESENTATIVE is AECOM (for CEI), under contract to City of Detroit DPW and GSD.
  - The OWNER is the City of Detroit, General Services Department, Parks and Recreation Division, and its Joe Louis Greenway consultants.
1. The OWNER provides this supplemental information for purposes of clarifying the design and engineering intent of the conceptual playground site design. The BIDDER may use the attached information to develop its bid, understanding the limited nature of the guidance provided by the OWNER. In his submittal, BIDDER shall account for differences between intent details and manufacturer's materials and recommended installation practices.
  2. BIDDER shall retain the services of Structural Engineer and Civil Engineer as necessary to establish footing depth, finished elevations, slopes, outfalls, etc., required for the execution of the BIDDER's playground scope. SITE CONTRACTOR will establish finished grades of adjacent sidewalks and pavilion-area catch basin, for BIDDER to meet and match.
  3. BIDDER shall retain a Certified Playground Safety Inspector (CPSI) to review playground construction documents / shop drawings, provide comment to the BIDDER, observe construction activities related to the BIDDER's scope of service, and provide playground inspection services to the BIDDER on behalf of the City of Detroit.
  4. EXISTING GRADES: BIDDER shall work from subgrade elevation developed by SITE CONTRACTOR from grading information developed under separate contract and reviewed by Structural and Civil Engineer under this contract. BIDDER's scope is to complete development of playground subgrade according to BIDDER's civil drawings, provide drainage and surfacing layers to finished grades developed under this contract, to meet and match the work of SITE CONTRACTOR on the perimeter of the playground zone.
  5. UTILITIES:
    - a. SLEEVING: BIDDER shall work with SITE CONTRACTOR on sleeving required for BIDDER's scope of work. SITE CONTRACTOR shall install sleeving proposed beneath concrete flatwork bordering playground, including that required to service adjacent pavilion. BIDDER shall furnish and install sleeving required for utility service, drainage, etc., within playground zone. Sleeving is to be Schedule 40, min 2" diameter, 150LF est.
    - b. STORM DRAINAGE: SITE CONTRACTOR shall furnish and install catch basin, manholes, structures, and RCP noted; and connect to existing drainage structure per plan with positive drainage. SITE CONTRACTOR shall coordinate with BIDDER on timing. BIDDER shall coordinate with SITE CONTRACTOR on finish grade elevations required.
    - c. ELECTRICAL: BIDDER shall provide underground electrical service from existing cabinet to playground equipment approximately 150LF as noted, including all connections, wiring, and conduit (if needed). BIDDER may use sleeving provided by SITE CONTRACTOR under separate scope, if available and not otherwise reserved, to traverse hardscape / flatwork. All utilities below or through concrete shall run through sleeving.
    - d. PLAYGROUND DRAINAGE: BIDDER shall furnish and install open-graded underdrain pipe in sock, cleanouts, and clean pea gravel drainage medium per design intent. BIDDER shall coordinate with SITE CONTRACTOR to facilitate playground drainage connection(s) to greater trailhead drainage system.
  6. ENVIRONMENTAL REMEDIATION (GEOGRID): Above subgrade provided by SITE CONTRACTOR, BIDDER shall furnish and install HDPE geogrid (Agttec "Geocell Ground Grid 2-inch" or equivalent as acceptable to the OWNER) composed of 2" thick cells backfilled with clean aggregate per manufacturer's recommendation and compacted, per the requirements of the project's Response Activity Plan. Sandwich geogrid between upper and lower layer of geotextile fabric, if grid is not otherwise enclosed. The barrier is an environmental remediation requirement of the site and project.

7. PLAYGROUND SURFACING: BIDDER shall review supplemental plans and design intent details, and provide a surfacing system for the playground area as noted.
  - a. Playground surfacing is intended to be a poured-in-place (PIP) system with select areas of PCC reinforcement. BIDDER shall furnish and install PIP system that addresses ASTM F1292 (latest) requirements for fall attenuation, critical fall height (identified by EQUIPMENT SUPPLIER as 10'-0") and other ASTM, CPSC, and IPEMA playground safety requirements to manufacturer's recommendations, with review and acceptance by the CPSI.
    - i. GT Impax Poured-in-Place Rubber, by Gametime (Fort Payne, AL) or
    - ii. Equivalent as reviewed by the CPSI and acceptable to the OWNER.
  - b. In the event the pricing of bids exceeds the project budget, the OWNER and CITY REPRESENTATIVE may value engineer the surfacing to incorporate engineered wood fiber (EWF) on "level" areas, with reinforced PIP on the "sloped" areas noted per supplemental plan. EWF shall meet fall attenuation, critical fall height (identified by EQUIPMENT SUPPLIER as 10'-0") and other requirements typical of playground safety, to manufacturer's recommendations, with review and acceptance by the CPSI. EWF system shall include wear mats in locations where mulch displacement is to be expected, at manufacturer's recommended depth within mulch bed.
    - i. EWF, by Mulch Outfitters (Dalton, GA) or
    - ii. Equivalent as reviewed by the CPSI and acceptable to the OWNER.
  - c. Base pricing shall be 100% PIP / reinforced PIP system. A Deduct Alternate for the EWF / reinforced PIP hybrid shall be furnished on the Bid Form.
  - d. BIDDER and his Engineers are responsible for the design and development of a surfacing and drainage system for the playground that ensures no standing water exists within 24h of a 1" or greater rainfall event.
  - e. Provide shop drawings, material samples, color samples, etc., to OWNER for review and acceptance.
8. PLAYGROUND SURFACE EDGING: BIDDER shall form, pour, and finish serpentine 6x18 concrete curb edge treatment as shown on plans and details. Edge is intended to accommodate playground base preparation, aggregate subbase, and surfacing system for either of Owner's preferred or alternate surfacing systems. Integral color from manufacturer's standard colors (using Sika Corporation - Aurora IL, or equivalent as acceptable to the OWNER).
  - a. BIDDER shall provide colored concrete curb edging per plans and details
  - b. SITE CONTRACTOR to provide adjacent sidewalk flatwork as shown.
  - c. Playground surfacing system AND landscape beds will thus be framed by concrete work.
9. SITE AMENITIES:
  - a. NATURAL QUARRIED LIMESTONE BENCHES: Furnish and install large blocks of limestone for bench / sitting surface adjacent to playground areas. (6) required, 18-24" D x 48-72" L x 18" H.
  - b. NATURAL GRANITE BOULDERS: Furnish and install large boulders of granite for free-form play activities within landscape beds, per plan. (20) required, 18-36" D x 36-72" L x 12-18" H. Blocks subject to review by OWNER, with BIDDER to field adjust / field shape stone on-site to acceptance of OWNER.
  - c. CURVED BENCHES: Furnish and install "Rough and Ready Curved" benches by Streetlife America (Philadelphia PA), as shown. Benches by manufacturer are 6'+/- modular, (7) units 20" D required, with (4) sets of modular backs and (8) armrests. Provide shop drawings, including footings.
10. LANDSCAPE BEDS: BIDDER shall provide drainage course, geogrid, planting mix, and mulch per supplemental drawing.
  - a. Beds shall have positive drainage. Finished elevation of mulch course shall not exceed that of adjacent concrete where the two meet.
  - b. Planting mix includes topsoil, fertilizers, and soil conditioners blended to create suitable growing medium for plants by others.
  - c. Coordinate mulch installation with CITY REPRESENTATIVE to allow plantings by others to proceed prior to mulch installation.
11. COORDINATION AND PLAYGROUND SITE ACCESS: the successful BIDDER will work with the SITE CONTRACTOR to stage equipment and materials, and develop access routes across the trailhead site in a manner so as not to impede the construction activities of either.

- a. BIDDER is responsible to secure his equipment and materials, by separate enclosure and/or off-site if necessary.
  - b. SITE CONTRACTOR shall stage his work (specifically, grading and concrete flatwork) in a manner that ensures BIDDER will have reasonable access to the playground construction zone; and will form and pour concrete walks bounding playground zone as coordinated by CITY REPRESENTATIVE.
12. PROGRESS CLAUSE: Construction scheduling and deadlines are essential within this contract. The successful BIDDER shall provide a construction calendar to the OWNER and FIDUCIARY, outlining the proposed construction scope and process. The BIDDER will work within the dates he presents to bring the project to timely installation and conclusion.
13. FURTHER INFORMATION: BIDDER shall review supplemental information, drawings, and details. If additional clarification is needed, request shall be made in writing (e-mail) to the FIDUCIARY no later than five (5) business days before the Bid Closing date and time, to allow time for appropriate response to all Bidders.

On behalf of the City of Detroit, General Services Department

William J. McCarley III  
Landscape Architect MI-1787

## Exhibit 2 – Revised Bid Tab form

**BID FORM PRICING SPREADSHEET v2***JOE LOUIS GREENWAY BID PACKAGE 1E - WARREN YARD PLAYGROUND*

## Base Bid Proposal

ITEM	DESCRIPTION	UNIT	QTY	UNIT PRICE	TOTAL COST
1	<b>MOBILIZATION</b>	LS	1		
2	<b>PLAYGROUND APPARATUS</b>	LS	1		
3	<b>APPARATUS INSTALLATION</b>	LS	1		
4	<b>SURFACING</b>				
4.1	PLAYGROUND SURFACING, PIP PER PLAN	LS	1		
4.2	FOR UNIT PRICE ONLY: 2" PVC SLEEVING	LF	150		
4.3	PLAYGROUND PCC EDGING, PER DETAIL	LF	375		
4.4	ELECTRICAL CONNECTION, PER PLAN	LS	1		
5	<b>SITE PREPARATION</b>				
5.1	SITE PREP / GRADING	LS	1		
5.2	LANDSCAPE BEDS, PER PLAN	SF	4650		
5.3	NATURAL QUARRIED LIMESTONE BENCHES, PER PLAN	EA	6		
5.4	NATURAL GRANITE BOULDERS, PER PLAN	TN	20		
5.5	CURVED BENCHES, BACKS AND ARMRESTS, PER PLAN	LS	7		
6	<b>PROTECTIVE FENCING</b>	LF	1000		
				TOTAL	

## Alternate Pricing

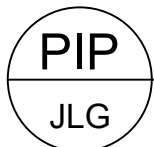
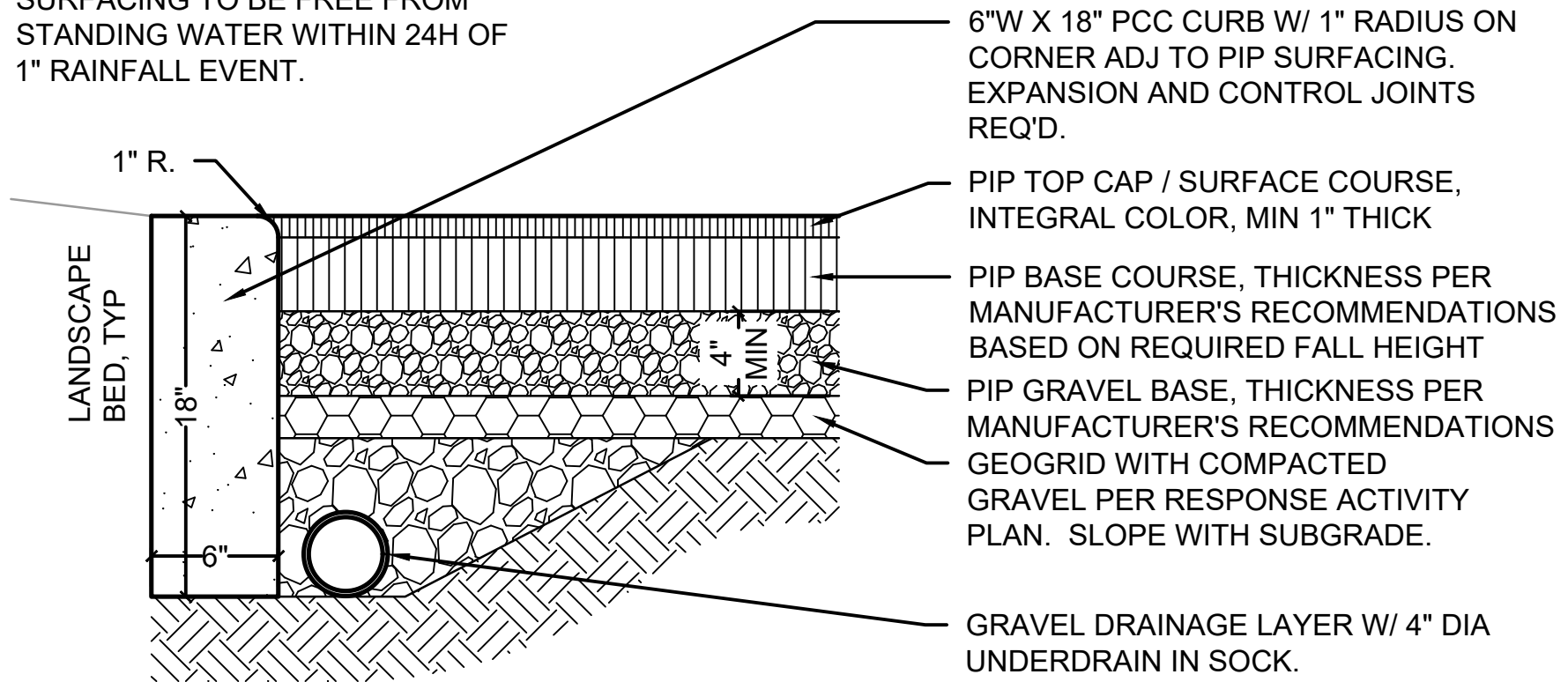
ITEM	DESCRIPTION	UNIT	QTY	UNIT PRICE	TOTAL COST
A1	SUB EWF FOR PIP, PER PLAN	LS	1		
A2	PIP SURFACING SYSTEM	SF	9025		
A3	REINFORCED PIP SLOPE	SF	975		
A4	EWF SURFACING SYSTEM	SF	9025		
A5	GEOGRID FOR REMEDIATION	SF	14650		
				TOTAL	



## Exhibit 3 – Site Drawings

NOTE: SHOP DRAWINGS AND ENGINEER'S CERTIFICATE REQUIRED FOR PIP SURFACING. CONTRACTOR TO REVIEW FALL HEIGHT REQUIREMENTS, PROPOSED EQUIPMENT, AND EQUIPMENT FALL ZONES, AND ACCOUNT FOR THE SAME IN PROPOSED SURFACING SYSTEM. CONTRACTOR TO FOLLOW MANUFACTURER'S RECOMMENDATION FOR PIP SYSTEM AND ITS INSTALLATION, UNDER OBSERVATION AND CONFIRMATION BY CONTRACTOR'S CPSI PROFESSIONAL

NOTE: CONTRACTOR TO ENSURE POSITIVE DRAINAGE ACROSS AND THROUGH PIP SYSTEM. PIP SURFACING TO BE FREE FROM STANDING WATER WITHIN 24H OF 1" RAINFALL EVENT.

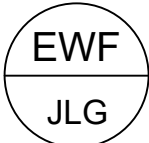
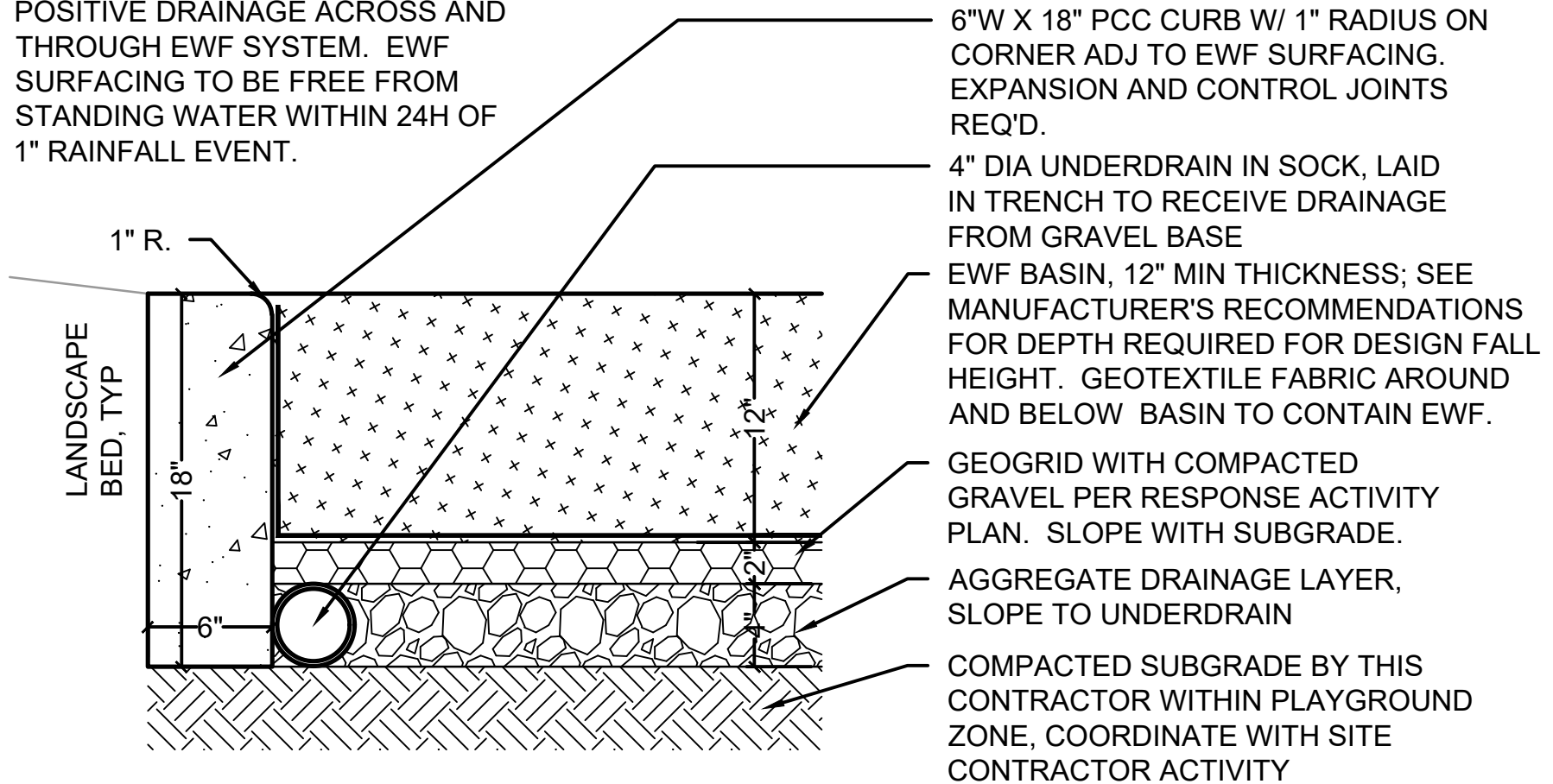


PIP PLAYGROUND SURFACING AND EDGE

SCALE: 1-1/2" = 1'-0"

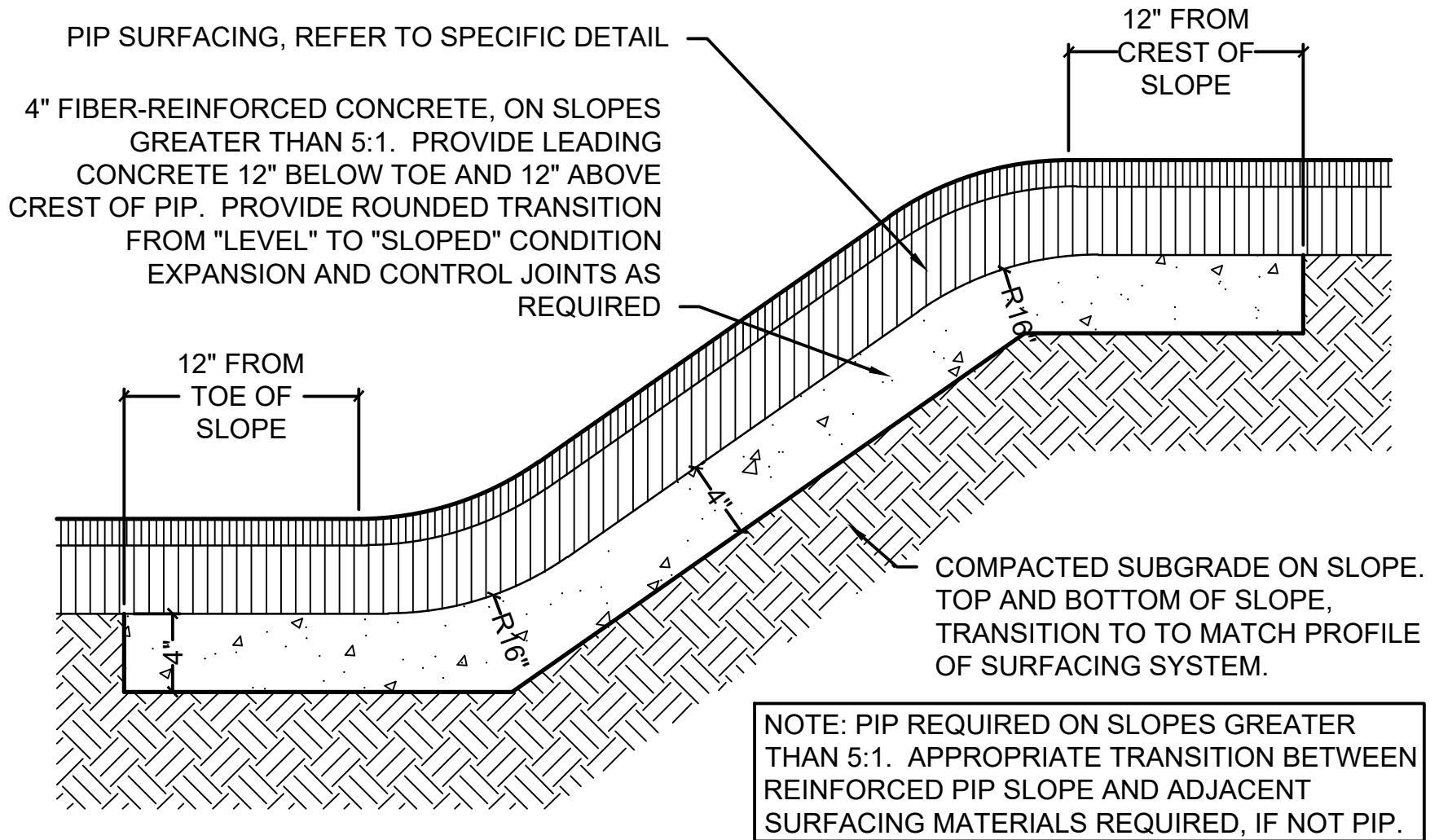
NOTE: SHOP DRAWINGS AND ENGINEER'S CERTIFICATE REQUIRED FOR EWF SURFACING. CONTRACTOR TO REVIEW FALL HEIGHT REQUIREMENTS, PROPOSED EQUIPMENT, AND EQUIPMENT FALL ZONES, AND ACCOUNT FOR THE SAME IN PROPOSED SURFACING SYSTEM. CONTRACTOR TO FOLLOW MANUFACTURER'S RECOMMENDATION FOR EWF SYSTEM AND ITS INSTALLATION, UNDER OBSERVATION AND CONFIRMATION BY CONTRACTOR'S CPSI PROFESSIONAL

NOTE: CONTRACTOR TO ENSURE POSITIVE DRAINAGE ACROSS AND THROUGH EWF SYSTEM. EWF SURFACING TO BE FREE FROM STANDING WATER WITHIN 24H OF 1" RAINFALL EVENT.



EWF PLAYGROUND SURFACING AND EDGE

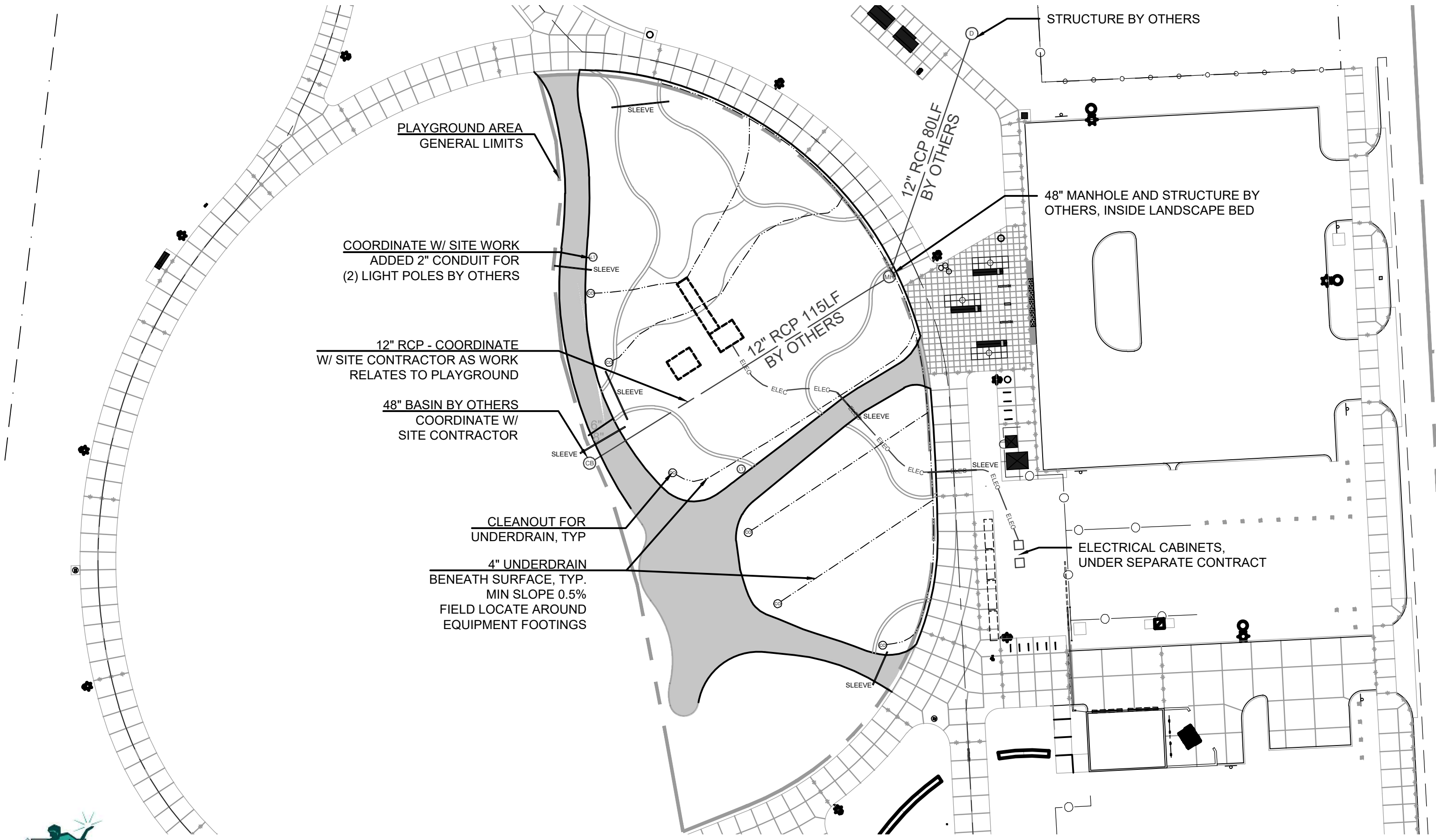
SCALE: 1-1/2" = 1'-0"



SLOPE  
JLG

PIP SURFACING WITH PCC BASE ON SLOPES < 5:1

SCALE: 1-1/2" = 1'-0"



PLAYGROUND AREA  
GENERAL LIMITS

COORDINATE W/ SITE WORK  
ADDED 2" CONDUIT FOR  
(2) LIGHT POLES BY OTHERS

12" RCP - COORDINATE  
W/ SITE CONTRACTOR AS WORK  
RELATES TO PLAYGROUND

48" BASIN BY OTHERS  
COORDINATE W/  
SITE CONTRACTOR

CLEANOUT FOR  
UNDERDRAIN, TYP

4" UNDERDRAIN  
BENEATH SURFACE, TYP.  
MIN SLOPE 0.5%  
FIELD LOCATE AROUND  
EQUIPMENT FOOTINGS

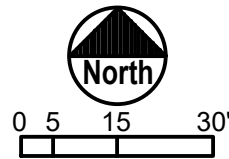
STRUCTURE BY OTHERS

48" MANHOLE AND STRUCTURE BY  
OTHERS, INSIDE LANDSCAPE BED

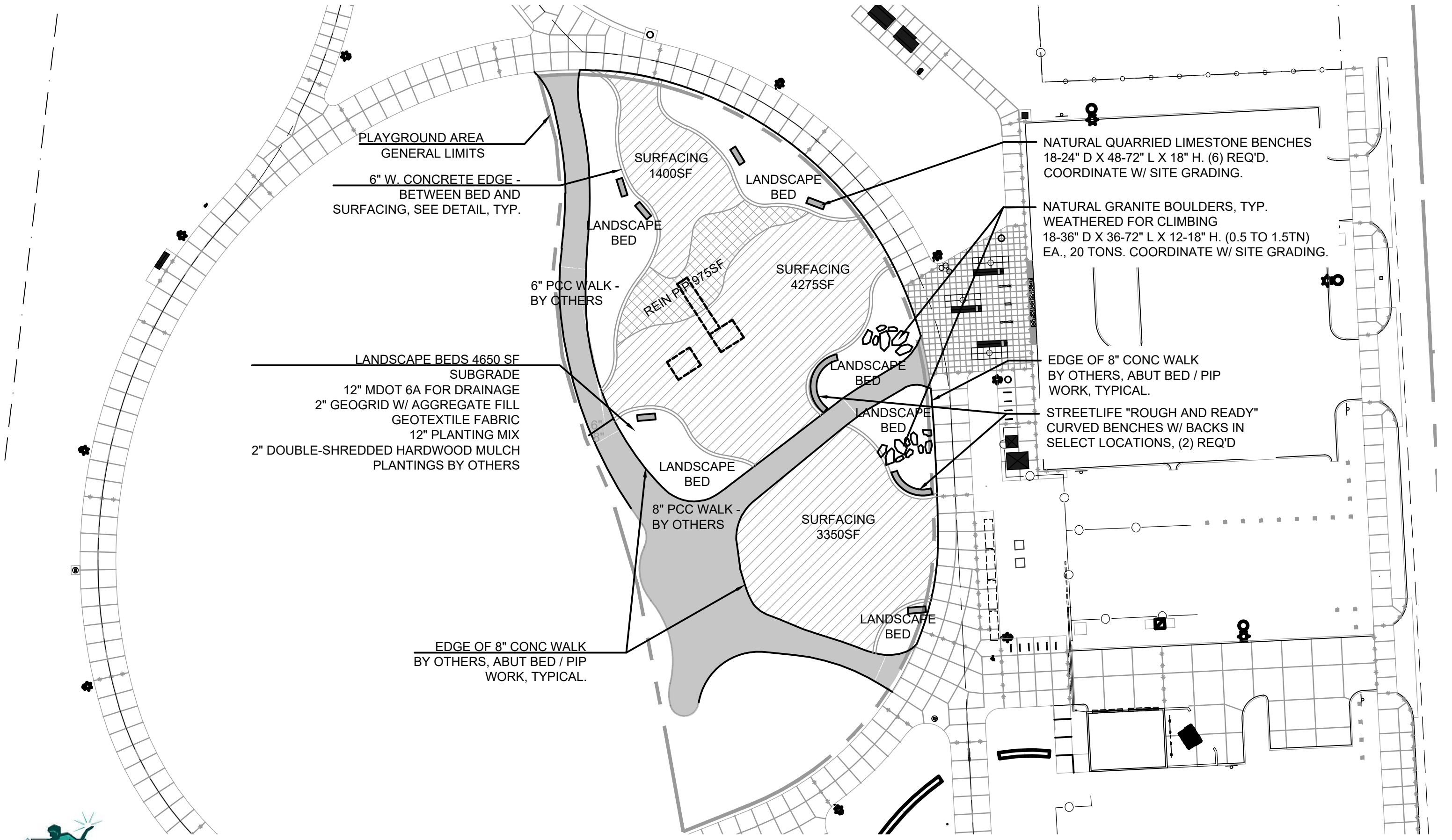
ELECTRICAL CABINETS,  
UNDER SEPARATE CONTRACT

12" RCP 80LF  
BY OTHERS

12" RCP 115LF  
BY OTHERS



SUPPLEMENTAL DRAWING  
**JOE LOUIS GREENWAY 1E - PLAYGROUND**  
EXHIBIT 1A - DRAINAGE CONCEPT AND UTILITIES



LANDSCAPE BEDS 4650 SF  
 SUBGRADE  
 12" MDOT 6A FOR DRAINAGE  
 2" GEOGRID W/ AGGREGATE FILL  
 GEOTEXTILE FABRIC  
 12" PLANTING MIX  
 2" DOUBLE-SHREDDED HARDWOOD MULCH  
 PLANTINGS BY OTHERS

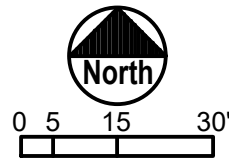
NATURAL QUARRIED LIMESTONE BENCHES  
 18-24" D X 48-72" L X 18" H. (6) REQ'D.  
 COORDINATE W/ SITE GRADING.

NATURAL GRANITE BOULDERS, TYP.  
 WEATHERED FOR CLIMBING  
 18-36" D X 36-72" L X 12-18" H. (0.5 TO 1.5TN)  
 EA., 20 TONS. COORDINATE W/ SITE GRADING.

EDGE OF 8" CONC WALK  
 BY OTHERS, ABUT BED / PIP  
 WORK, TYPICAL.

STREETLIFE "ROUGH AND READY"  
 CURVED BENCHES W/ BACKS IN  
 SELECT LOCATIONS, (2) REQ'D

EDGE OF 8" CONC WALK  
 BY OTHERS, ABUT BED / PIP  
 WORK, TYPICAL.



SUPPLEMENTAL DRAWING  
**JOE LOUIS GREENWAY 1E - PLAYGROUND**  
 EXHIBIT 1B - SURFACING AND SITE AMENITIES

**End of Addendum No. 3**